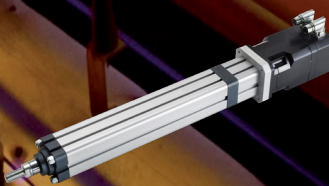
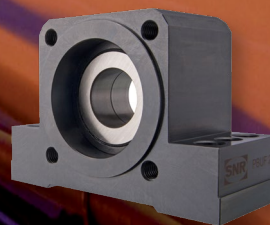
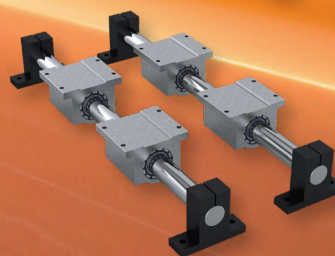
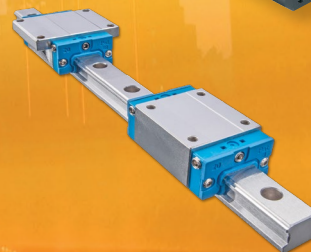


NTN
AUTOMATION

LINEAR MOTION RANGE

NTN® **SNR**®

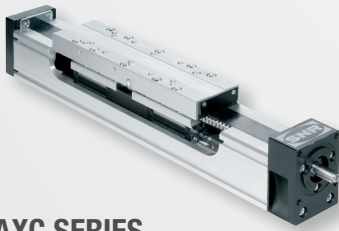
WWW.NTNAMERICAS.COM



A LARGE LINEAR MOTION RANGE

to meet every application requirements

COMPACT AXIS

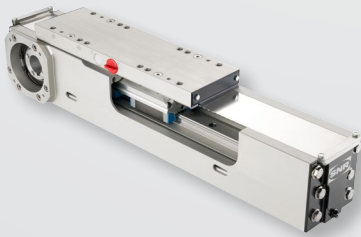


AXC SERIES

Size 40, 60, 80, 100, 120

Modular design, system universally applicable as single-axis and in complex multiple-axis systems

- Different guiding and drive options
- Belt drive in Omega design
- Long-life and long-term maintenance free



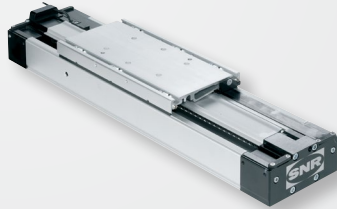
AXF SERIES

Size 100

Based on the AXC series.

- Available with tooth belt and screw drive
- Specially developed to prevent the deposit of residues at the profile.
- Specifically optimized for food, pharmaceutical and semiconductor industries applications

PARALLEL AXIS



AXDL SERIES

Size: 110, 160, 240

- Profile with high rigidity (especially with synchronous belt drive)
- Protection against contamination for guide and drive system
- Long-life and long-term maintenance free

LINEAR TABLES AXIS



AXLT SERIES

Size: 155, 225, 325, 455

- Particularly suitable for high loads, especially torque loads
- Protected guidance and drive system by optional bellows
- Can be combined to cross table variations

PRECISION AXIS

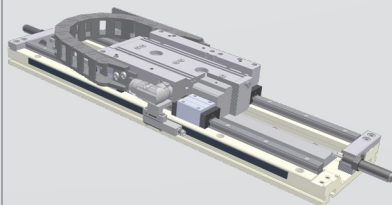


AXBG SERIES

Size 15, 20, 26, 33, 46, 55

- Extremely compact design and very rigid steel profile
- High positioning accuracy

LINEAR MOTOR AXIS



AXLM SERIES

Size: 155, 225, 325

- High dynamics and high accuracy
- Guidance: two parallel assembled linear guides
- Particularly suitable for high loads, especially torque loads

SYSTEM AXIS



GANTRY, LIFTING AND TELESCOPIC AXIS

Telescopic axis

- For vertical and horizontal applications
- Suitable for use in confined installation space
- Velocity up to 10 m/s

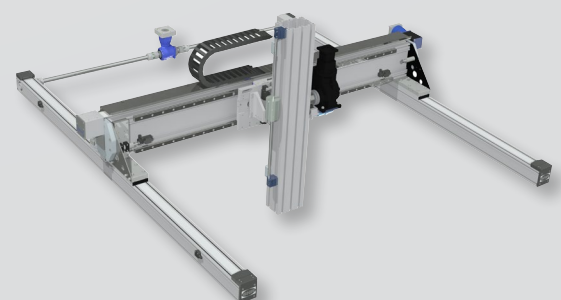
Lifting axis

- For loads over 1000 kg

Gantry axis

- Undivided length up to 10 m
- Tooth belt or rack and pinion drive

COMPLETE SYSTEMS



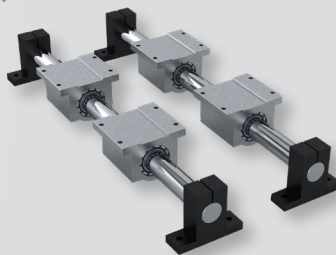
BALL SCREWS



**Diameter 6 to 80 mm for rolled and
4 to 120 mm for grinded ball screws**

- Right and left hand helix
- Customized end machining
- Fixed and floating bearing units

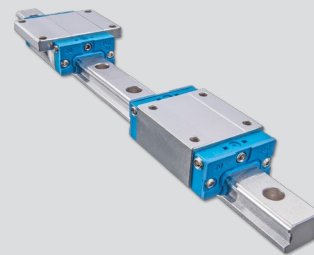
BALL BUSHINGS



**Diameter 3 to 150 mm
Diameter 1/4 to 2 inch**

- Standard linear ball bushings and super linear ball bushings
- Standard material and stainless steel available
- Linear Sets
- Support rails, shaft supports, traverses, solid and hollow shafts

LINEAR GUIDES

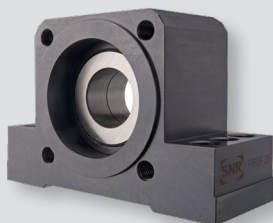


**Standard series in size 15 - 55
Miniature series in size 07 - 15**

Conventional version and version with patented ball chain technology

- Dimension according to DIN 645
- High load ratings
- Long-term maintenance-free for carriages with ball chain
- Jointed rails with universal combined segments
- Standard series with 4 ball rows and arrangement of a race ways at a 45° angle
- Standard carriages with lubrication connection from all sides

BALL SCREW SUPPORT



**BSTK - BSTF
Shaft diameter 17 - 60 mm**

- High load rating for vertical applications
- Easy assembling
- High service life time
- High rigidity

**BK - BF - EK - EF
Shaft diameter 06 - 50 mm**

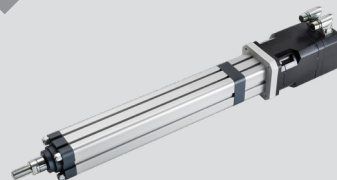
- Asian range of bearing units
- well known dimension

COMMERCIAL ACTUATORS



- 115VAC/230VAC 1 PH
- 12,24,36,48,90 VDC
- 25# to 3000#
- Ball or Acme Screw
- IP44-IP69K
- Options: Limit switches potentiometer, manual drive

PROGRAMMABLE ACTUATORS

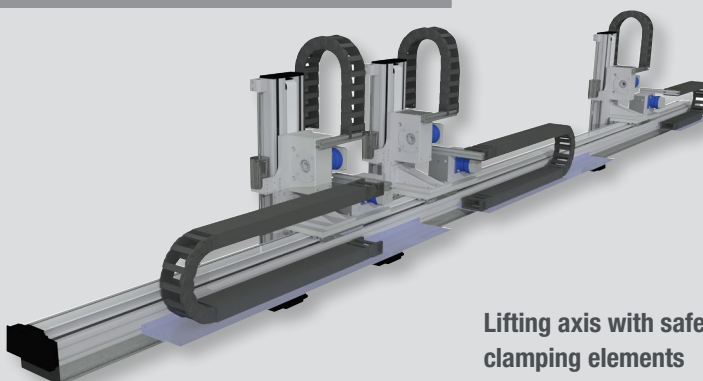


- Stepper, Servo, AC or DC Motor driven
- In-Line or Parallel Mounting
- Ball or Acme Screw
- IP44-IP65
- Many Mounting Options

Standard combinations with the AXS, AXC and AXDL range

Modular design system

- Special solutions for specific or customised applications
- Optional with switches and energy chains, gantry support legs and all connecting elements
- Ready for installation



**Lifting axis with safety brakes and
clamping elements**



LINEAR MOTION RANGE

NTN[®] AUTOMATION

NTN Automation Headquarters:

960A Maddox Simpson Parkway
Lebanon, TN 37090

Phone: 847.298.7500 x21300

Email: automation@ntnusa.com

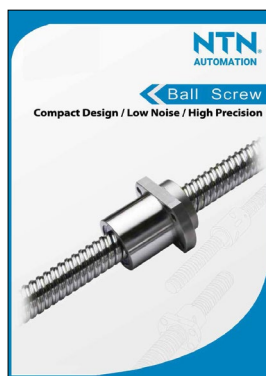
NTNAmericas.com

Further information

- On our Website:
www.ntnamerica.com
- In our catalogs

Please send your
requests to:

automation@ntnusa.com



This document is the exclusive property of NTN-SNR ROULEMENTS. Any total or partial reproduction hereof without the prior consent of NTN-SNR ROULEMENTS is strictly prohibited. Legal action may be brought against anyone breaching the terms of this paragraph.

NTN-SNR ROULEMENTS shall not be held liable for any errors or omissions that may have crept into this document despite the care taken in drafting it. Due to our policy of continuous research and development, we reserve the right to make changes without notice to all or part of the products and specifications mentioned in this document.

© NTN-SNR ROULEMENTS, international copyright 2016

NTN[®] SNR[®]



With You